

## Shuttle Accessory POR01 Serial Port Adapter for POS01

The Shuttle All-in-One PC of the X50 and P90U series [1] can be equipped with the optional accessory POS01, which is an extension kit with four serial ports (2x D-Sub and 2x RJ45), one parallel port and an RJ11 DIO port for cash drawers. With the help of the adapter cable POR01, the RJ45 ports can be converted to the 9-pin D-Sub standard, which is the traditional connector for serial devices.

[1] this includes the following models: X50V4, X50V5, X50V5U3, X50V6, X50V6U3, X50V7, X50V7U3, X50V8, X50V8U3, P90U, P90U3, P90U5, P92U, P92U3, P92U5

## Shuttle Accessory POR01



Accessory POR01

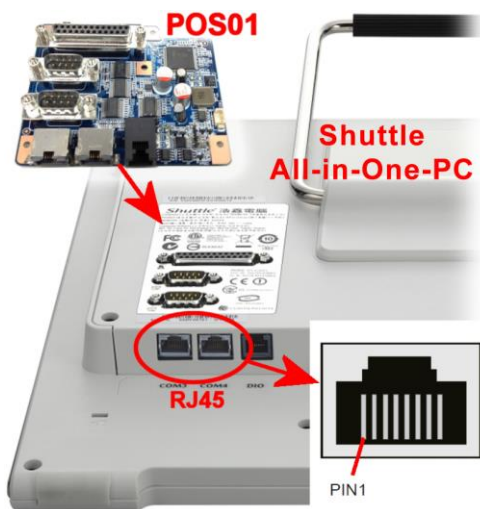


RJ45 connector



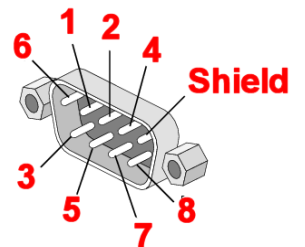
9-pin D-Sub connector

| Specification     |   |
|-------------------|---|
| Scope of delivery | - Adapter cable<br>- This specification |
| Connector 1       | RJ45, 8-pin, shielded                   |
| Connector 2       | D-Sub, 9-pin, male                      |
| Length            | ca. 70 cm                               |
| Order number      | POA-POR01                               |



POS01 pin assignment of COM3/COM4 port with RJ45 output connector:

| Pin    | Signal name             |
|--------|-------------------------|
| 1      | RxD Transmit Data       |
| 2      | TxD Transmit Data       |
| 3      | DSR Data Set Ready      |
| 4      | DTR Data Terminal Ready |
| 5      | RTS Request to Send     |
| 6      | DCD Data Carrier Detect |
| 7      | CTS Clear to Send       |
| 8      | RI Ring Indicator       |
| Shield | GND Ground              |



Pin assignment of the 9-pin D-Sub connector

